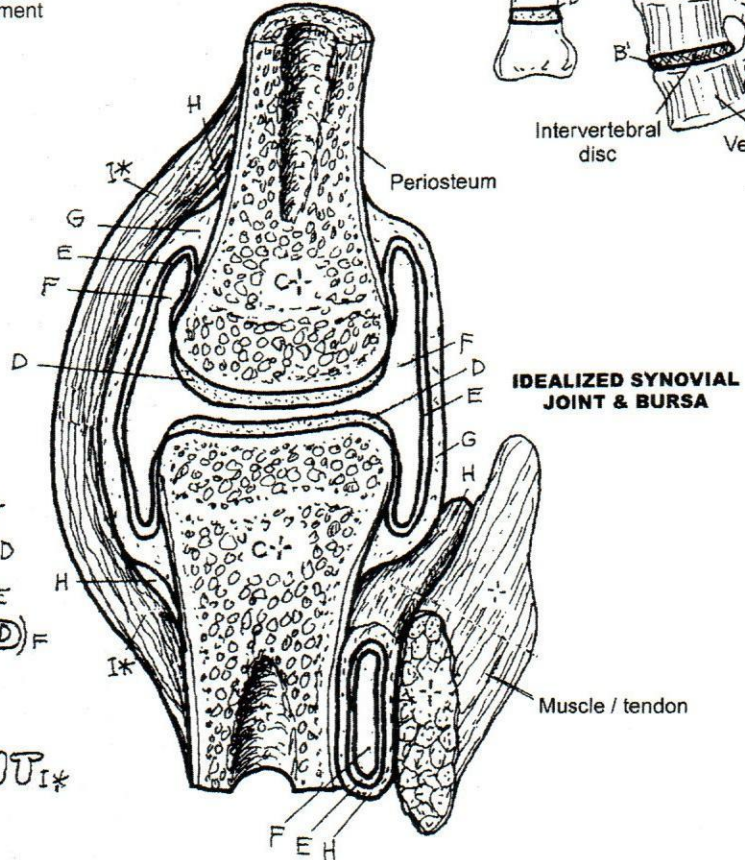
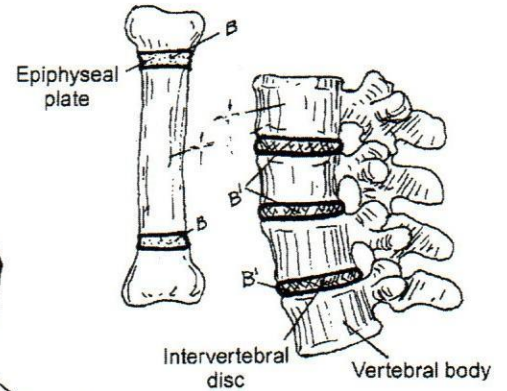
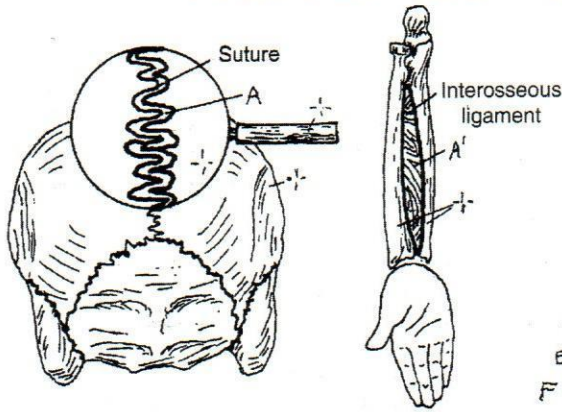


CN: Use a light blue for D, black for F, and gray for H.
 (1) Do not color the bones in the upper half of the page.
 (2) Below, color the arrows pointing to the location of the joints as well as the joint representations.

CARTILAGINOUS JOINT
IMMOVABLE_A
PARTLY MOVABLE_B

FIBROUS JOINT
IMMOVABLE_A
PARTLY MOVABLE_{A'}



SYNOVIAL JOINT
 (Freely movable)

- ARTICULATING BONES_C
- ARTICULAR CARTILAGE_D
- SYNOVIAL MEMBRANE_E
- SYNOVIAL CAVITY (FLUID)_F
- JOINT CAPSULE_G
- BURSA_H
- COLLATERAL LIGAMENT_{I*}

TYPES OF SYNOVIAL JOINTS

