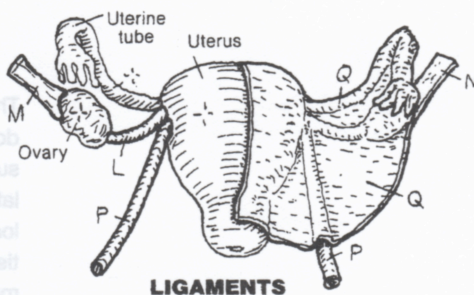


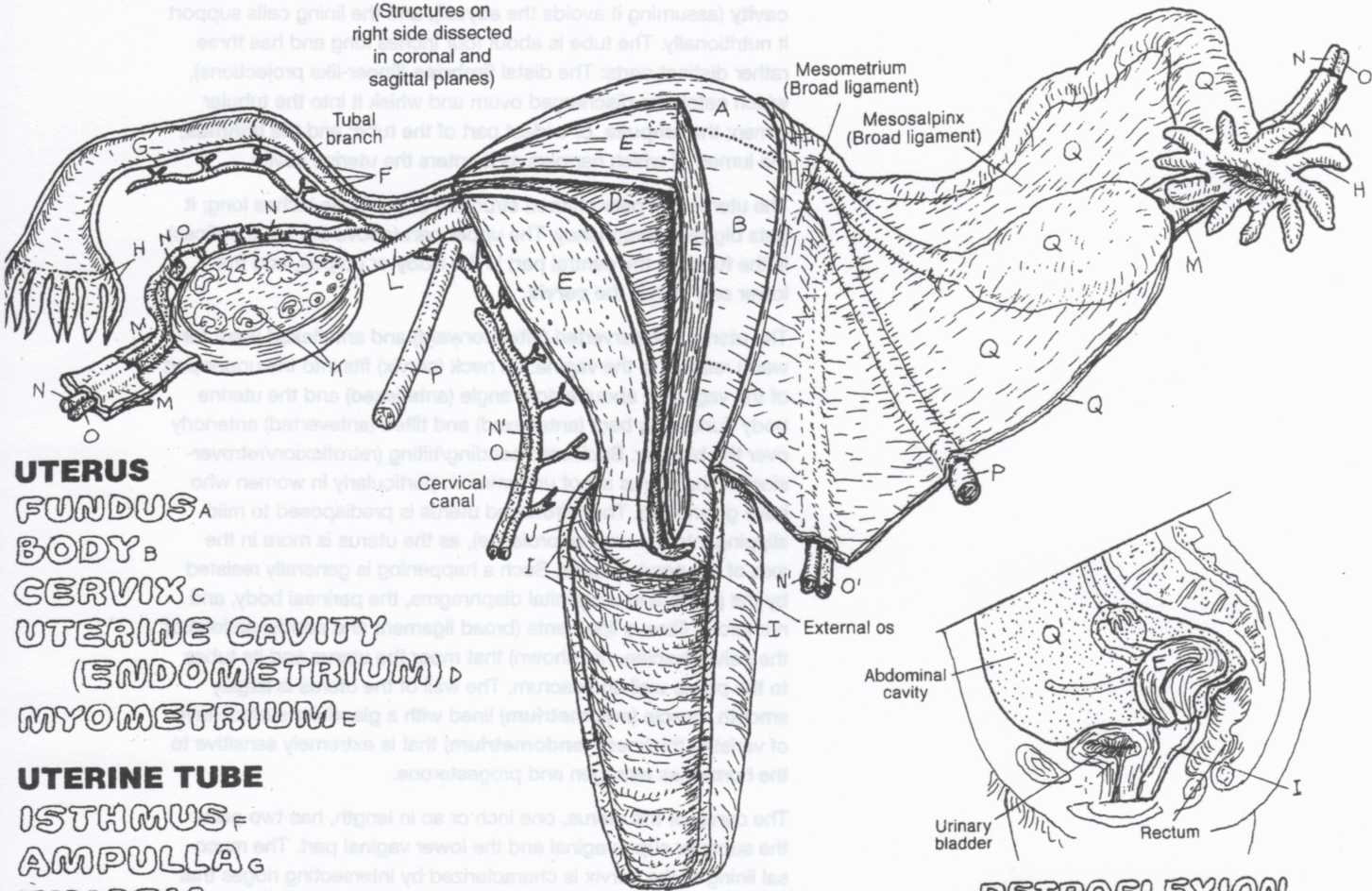
REPRODUCTIVE SYSTEM UTERUS, UTERINE TUBES, & VAGINA

CN: Use red for N, blue for O, and light colors for D, E, and Q. (1) Begin with the left half of the large illustration. Only parts of the ovarian and uterine veins are shown. Nerves and lymph vessels that may accompany arteries and veins are not shown. (2) Color the two views of the anteverted and the retroverted uterus; above, color the major ligaments.



ANTERIOR VIEW

(Structures on right side dissected in coronal and sagittal planes)



UTERUS

FUNDUS A

BODY B

CERVIX C

UTERINE CAVITY

(ENDOMETRIUM) D

MYOMETRIUM E

UTERINE TUBE

ISTHMUS F

AMPULLA G

FIMBRIA H

VAGINA I

FORNIX OF VAGINA J

RELATED STRUCTURES

OVARY K

OVARIAN LIGAMENT L

SUSPENSORY LIG. OF OVARY M

OVARIAN ARTERY N

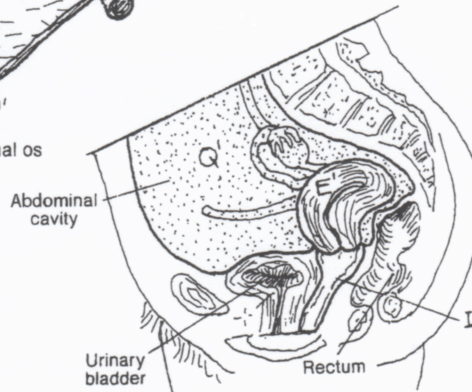
OVARIAN VEIN O

ROUND LIG. OF UTERUS P

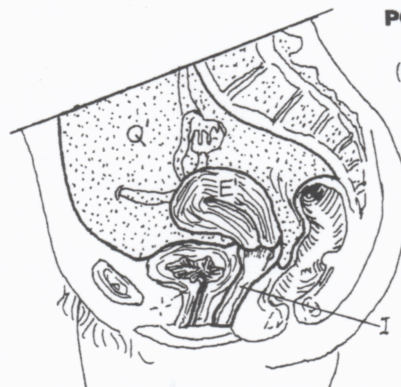
UTERINE ARTERY N'

UTERINE VEIN O'

BROAD LIG. (PERITONEUM) Q



RETROFLEXION (TIPPED) E'



ANTEFLEXION (NORMAL) E'

POSITION OF UTERUS (Sagittal view)