

CN: Use the colors from page 158 for the ovary, A, and uterine tube, M. Use red for K and R, yellow for L, blue for S, and very light colors for C-J, M, O, and P. (1) Color the development of the female germ cell in both upper and lower views of the sectioned cell in the ovary. The oocyte, C, is colored through ovulation. In the large illustration, color the background stroma, B, gray.

OVARIAN STRUCTURES

EPITHELIUM / TUNICA ALBUGINEA A

CONNECTIVE TISSUE STROMA B*

OOCYTE DEVELOPMENT

OOCYTE / OVUM c

PRIMORDIAL FOLLICLE d

PRIMARY FOL. e

SECONDARY FOL. f

MATURING FOL. g

MATURE (GRAAFIAN) FOL. h

RUPTURED FOL. i

DISCHARGED OVUM c'

ATRETIC FOL. j

CORPUS HEMORRHAGICUM k

YOUNG CORPUS LUTEUM l

MATURE CORPUS LUTEUM l'

CORPUS ALBICANS l''

RELATED STRUCTURES

UTERINE TUBE m

FIMBRIAE m'

BROAD LIGAMENT n

MESOSALPINX o

MESOVARIUM p

SUSPENSORY LIGAMENT OF OVARY q

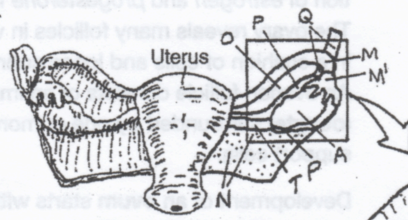
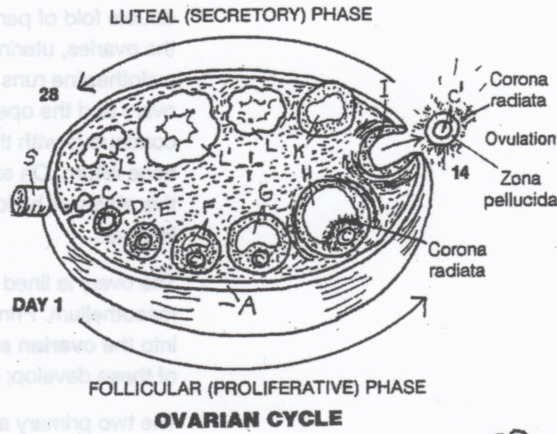
OVARIAN ARTERY r

OVARIAN VEIN s

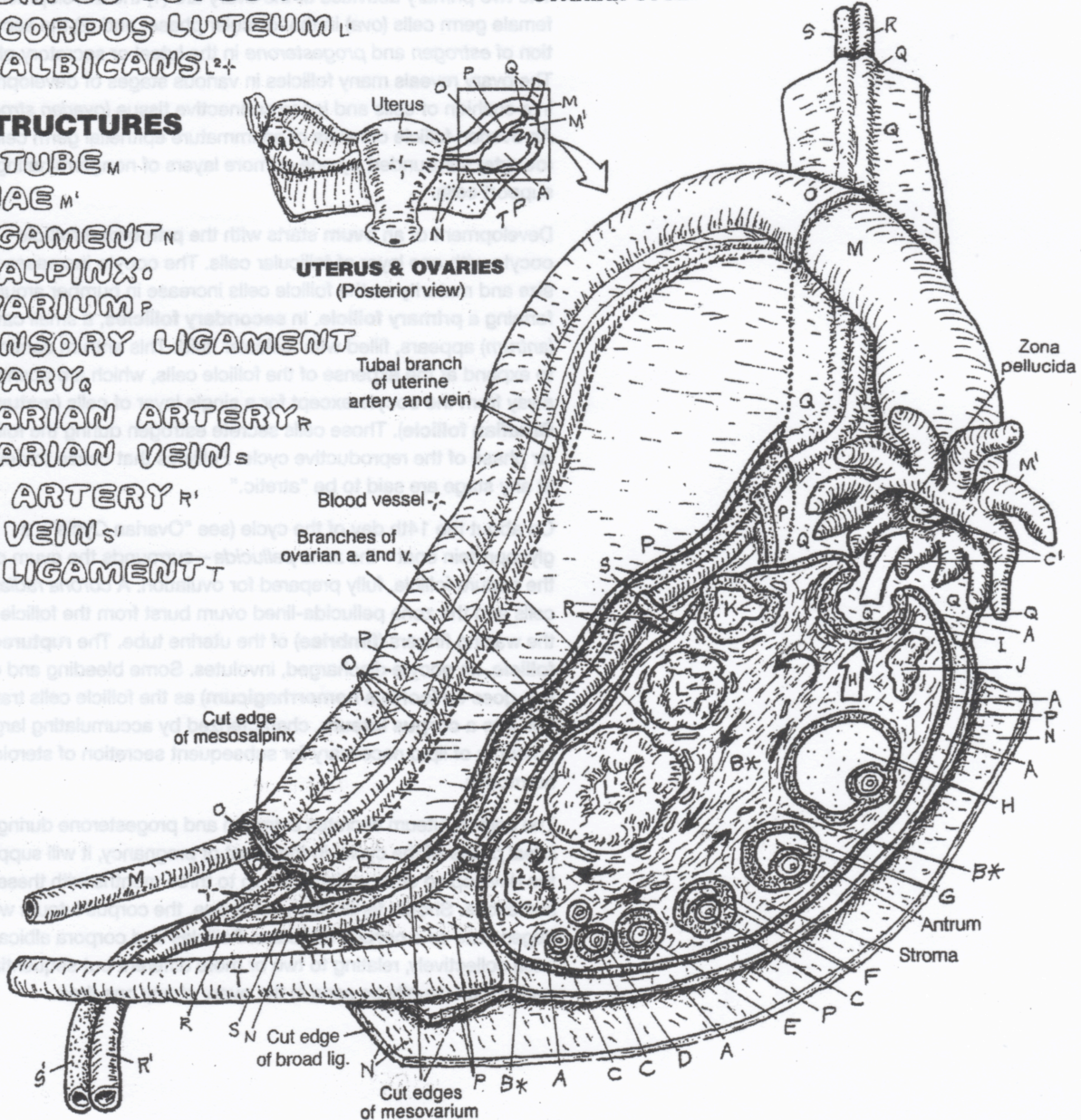
UTERINE ARTERY r'

UTERINE VEIN s'

OVARIAN LIGAMENT t



UTERUS & OVARIES
(Posterior view)



POSTERIOR VIEW
(Schematic)

Cut edge of mesosalpinx

Tubal branch of uterine artery and vein

Blood vessel

Branches of ovarian a. and v.

Cut edge of broad lig.

Cut edges of mesovarium