

REPRODUCTIVE SYSTEM

FEMALE REPRODUCTIVE SYSTEM

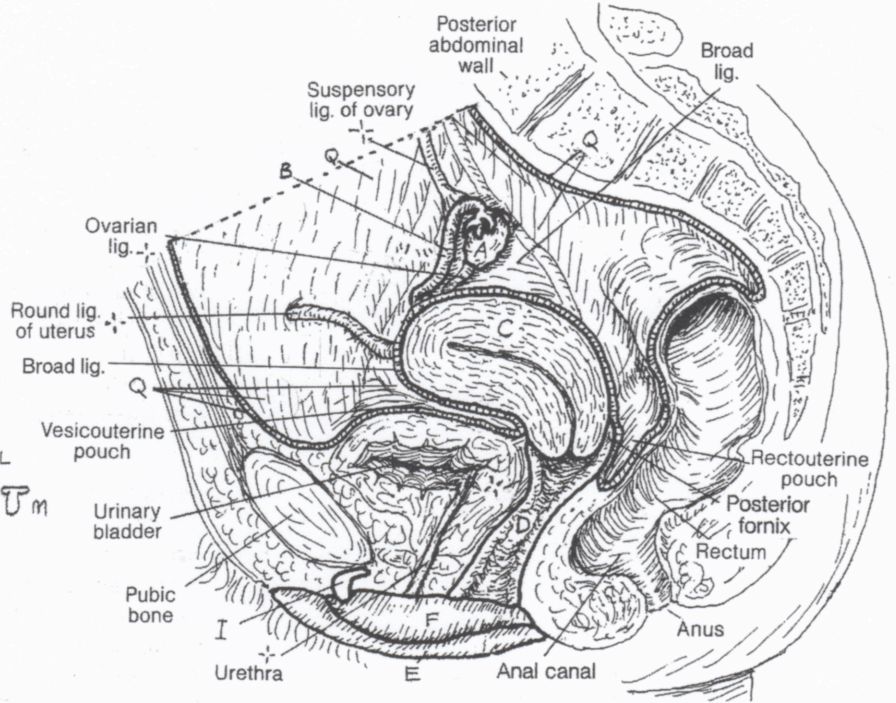
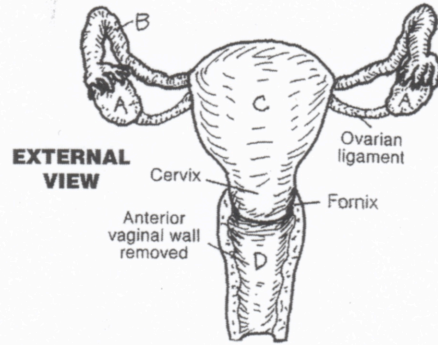
CN: (1) Color the two upper views of the internal reproductive structures together. In the medial view, color the double line representing the cut edge of the parietal peritoneum and the broader peritoneal lining, Q, of the abdominal and pelvic walls a light gray. (2) In both lower drawings, color the vestibule, N, a very light gray after coloring orifices D¹ and O, and the inner walls of F.

INTERNAL ORGANS

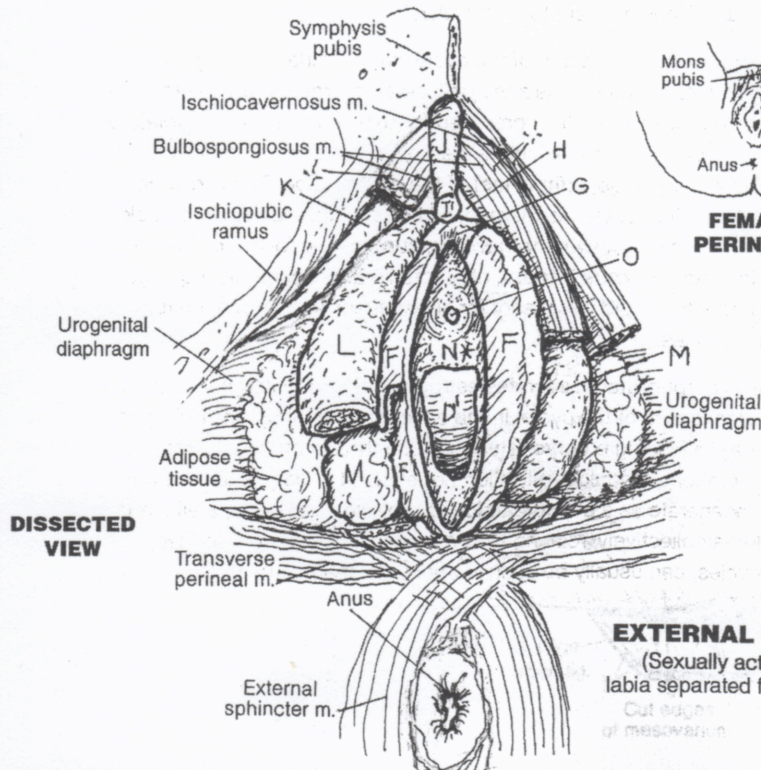
- OVARY^A
- UTERINE (FALLOPIAN) TUBE^B
- UTERUS^C
- VAGINA^D

EXTERNAL GENITALS

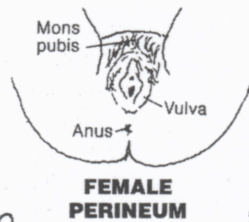
- LABIUM MAJUS^E
- LABIUM MINUS^F
- FRENULUM^G
- PREPUCE^H
- CLITORIS^I
- GLANS^{I'}
- BODY^J
- CRUS^K
- BULB OF THE VESTIBULE^L
- VESTIBULAR GLAND/DUCT^M
- VESTIBULE^{N*}
- URETHRAL ORIFICE^O
- VAGINAL ORIFICE^{D¹}
- HYMEN^P
- PARIETAL PERITONEUM^Q



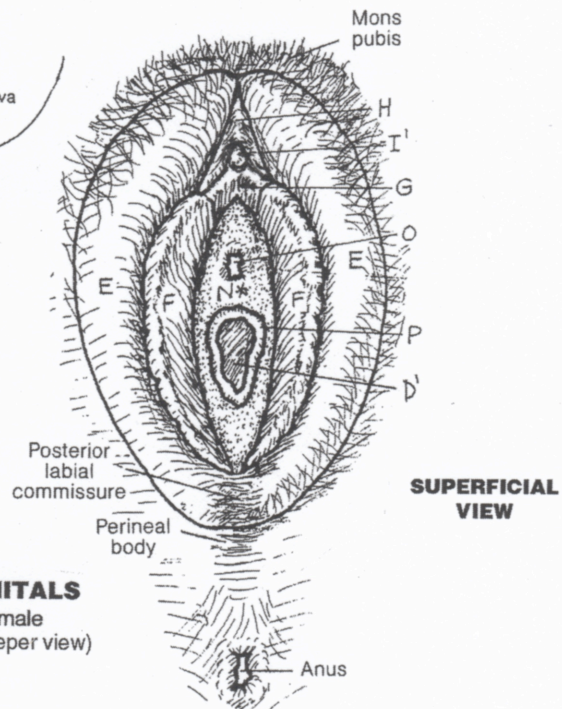
MEDIAL VIEW
(Right side, genitourinary structures)



DISSECTED VIEW



FEMALE PERINEUM



SUPERFICIAL VIEW

EXTERNAL GENITALS
(Sexually active female labia separated for deeper view)