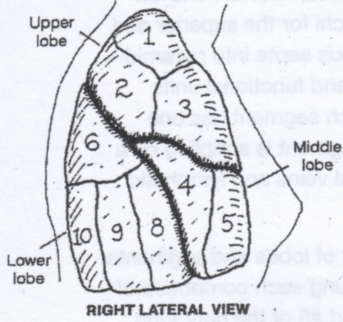


TRACHEA
MAIN PRIMARY BRONCHUS,
LOBAR (SECONDARY) BRONCHUS.

CN: Save blue for H, purple for I, and red for J. (1) Use 10 different colors for the segments of both lungs, and key those colors to the 10 segmental bronchi of each lung. (2) Follow the arrows to the respiratory unit. Use one light color for the alveoli, G¹, and the alveolar sacs, G. In the gas exchange diagram, note that red blood cells in the capillary I receive three different colors according to their stage of oxygenation.

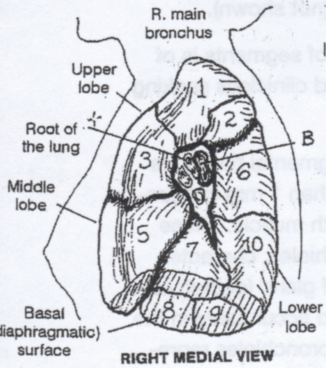
1 APICAL 2 POSTERIOR 3 ANTERIOR 4 LATERAL (R.L.)
4 SUPERIOR (L.L.) 5 MEDIAL (R.L.) 5 INFERIOR (L.L.)
6 SUPERIOR 7 MEDIAL BASAL 8 ANTERIOR BASAL
9 LATERAL BASAL 10 POSTERIOR BASAL

RIGHT LUNG



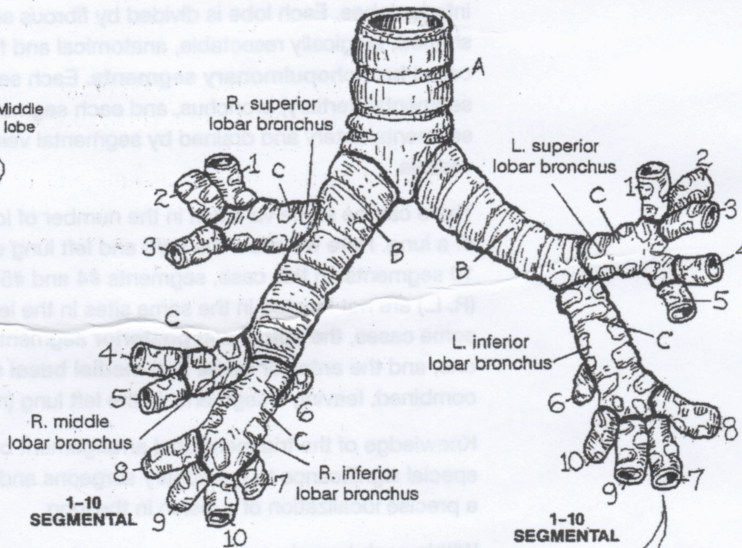
RIGHT LATERAL VIEW

BRONCHOPULMONARY SEGMENTS

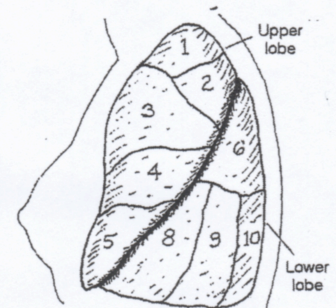


RIGHT MEDIAL VIEW

BRONCHIAL TREE

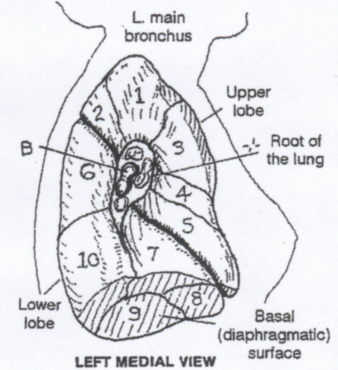


LEFT LUNG



LEFT LATERAL VIEW

BRONCHOPULMONARY SEGMENTS



LEFT MEDIAL VIEW

TERMINAL RESPIRATORY UNIT

BRONCHIOLE,
RESPIRATORY BRONCHIOLE,
ALVEOLAR DUCT,
ALVEOLAR SAC,
ALVEOLUS,
PULMONARY ARTERIOLE,
CAPILLARY NETWORK,
PULMONARY VENULE.

