

RESPIRATORY SYSTEM LOBES & PLEURA OF THE LUNGS

CN: Use bright colors for A-E, very light colors for F and G, and a reddish-brown color for H. The thickness of the pleurae, F and G, has been enlarged for coloring purposes. (1) Color the anterior view. The ribs and intercostal muscles have been removed (see page 48). Layers of pleurae (F, G)

have been stripped away and separated to reveal the pleural cavity. This potential space is drawn as a dark line. (2) Color the coronal section. (3) At upper right, color the cross section through T5 (lobes of the lung, pleurae, bronchi, and vessels) seen from above.

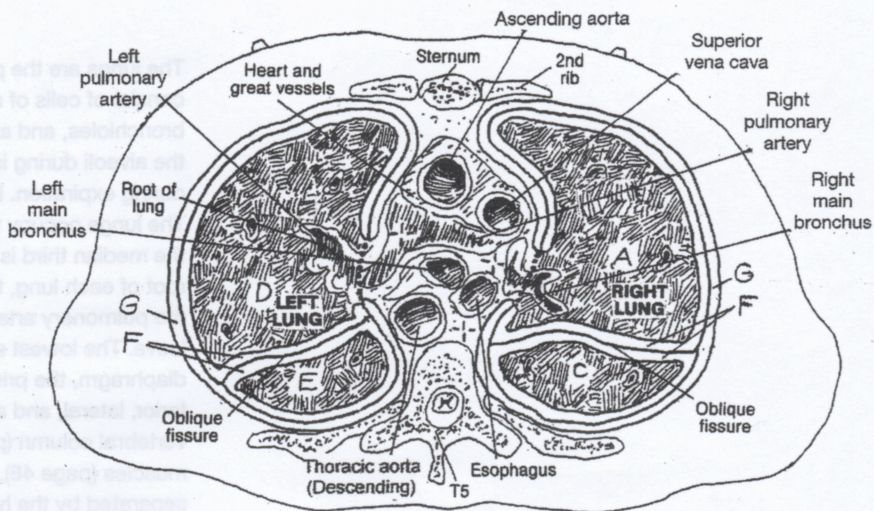
LOBES

- RIGHT UPPER A
- RIGHT MIDDLE B
- RIGHT LOWER C
- LEFT UPPER D
- LEFT LOWER E

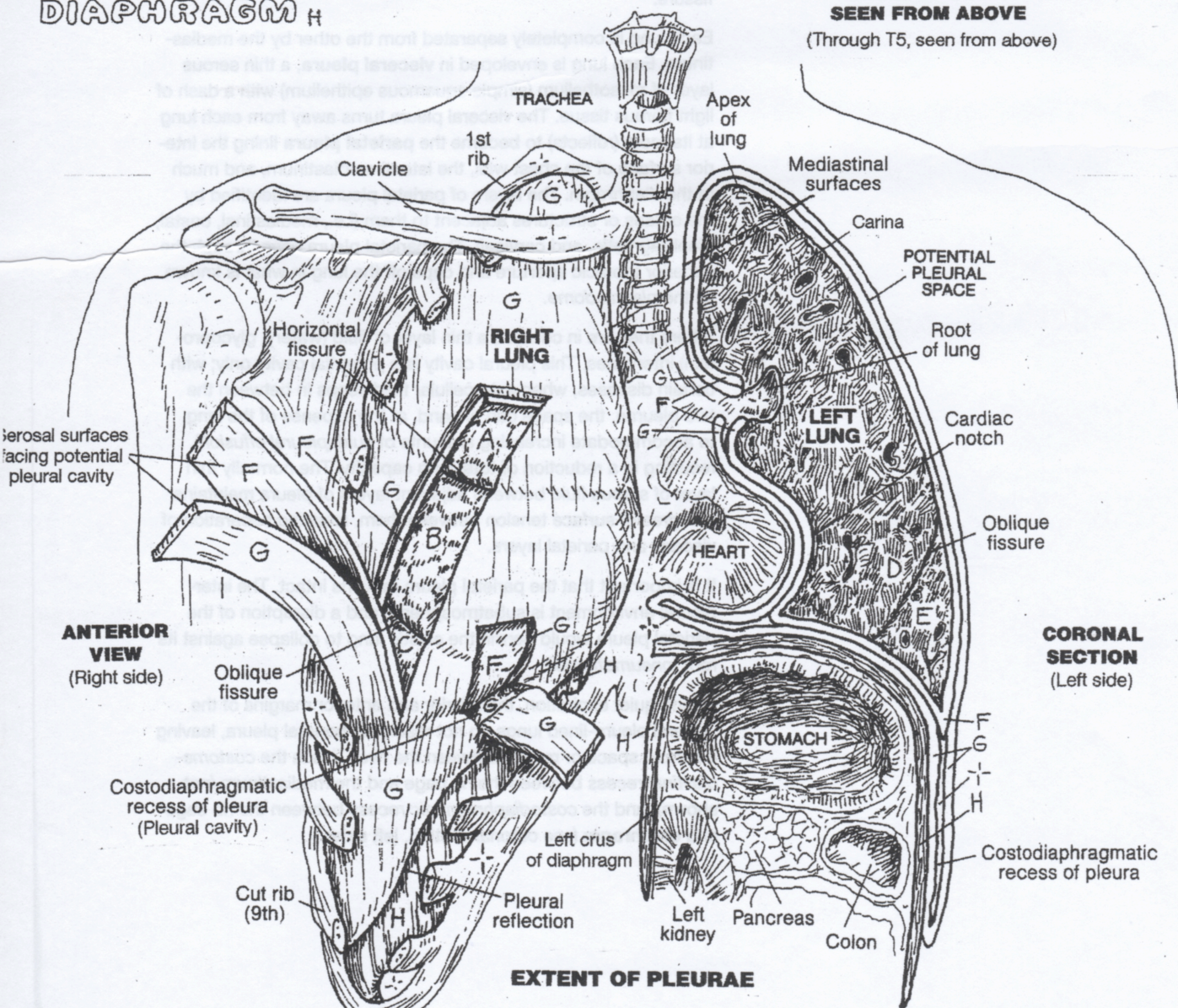
PLEURAE

- VISCERAL PLEURA F
- PLEURAL SPACE +
- PARIETAL PLEURA G

DIAPHRAGM H



Posterior
**CROSS SECTION
SEEN FROM ABOVE**
(Through T5, seen from above)



EXTENT OF PLEURAE