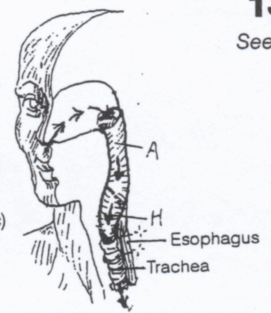


CN: Use bright colors for N, O, and Q. (1) Begin with the overview diagram in the upper right corner. (2) Complete the large composite sagittal section; color gray the arrows representing air flow. Take note of the non-colorable structures surrounding the pharynx/larynx as a frame of reference. (3) Color all six laryngeal views simultaneously.

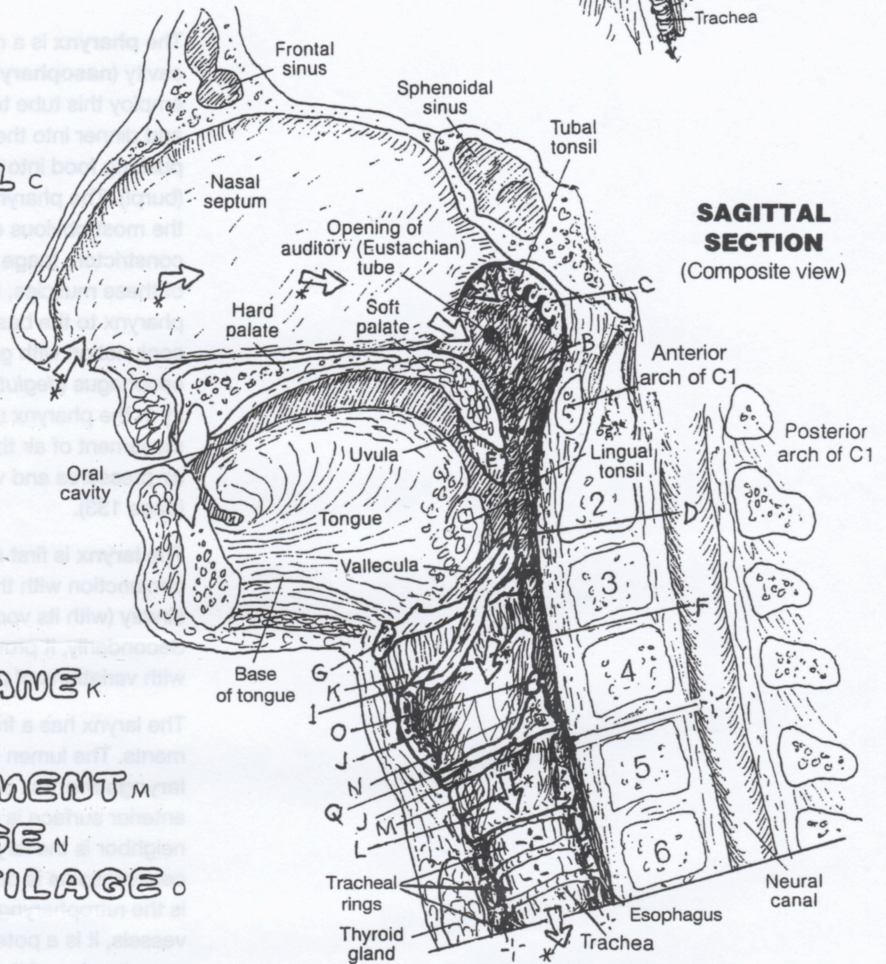
PHARYNX & LARYNX
(Diagrammatic)



- PHARYNX^A
- NASOPHARYNX^B
- PHARYNGEAL TONSIL^C
- OROPHARYNX^D
- PALATINE TONSIL^E
- LARYNGOPHARYNX^F

- HYOID BONE^G

- LARYNX^H
- LARYNGEAL CAVITY^{H'}
- EPIGLOTTIS^I
- THYROID CARTILAGE^J
- THYROID MEMBRANE^K
- CRICOID CARTILAGE^L
- CRICOTHYROID LIGAMENT^M
- ARYTENOID CARTILAGE^N
- CORNICULATE CARTILAGE^O
- VESTIBULAR FOLD^P
- VOCAL FOLD^Q
- RIMA GLOTTIS^{R*}

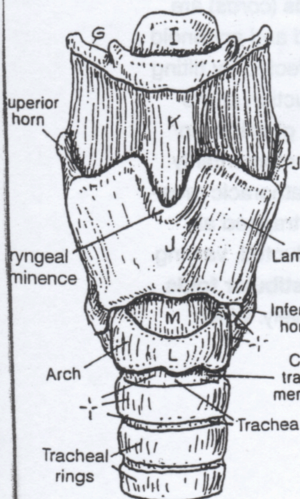


SAGITTAL SECTION
(Composite view)

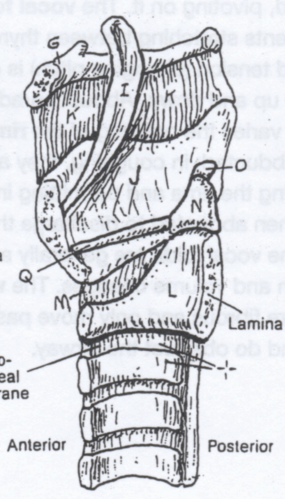
AIR FLOW*

VIEWS OF THE LARYNX

ANTERIOR VIEW



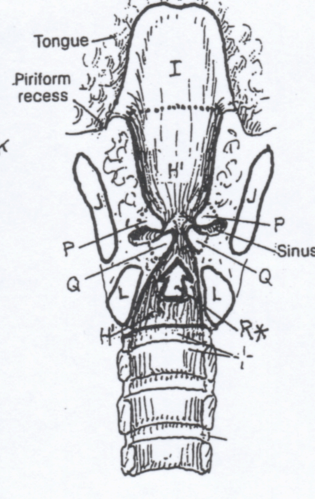
SAGITTAL SECTION (Composite)



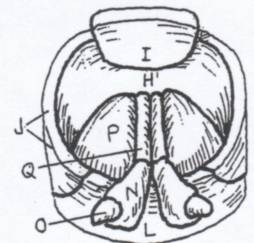
POSTERIOR VIEW



CORONAL SECTION (Posterior view)



SUPERIOR POSTERIOR VIEW
Phonation:
Vocal folds adducted



SUPERIOR POSTERIOR VIEW
Inspiration:
Vocal folds abducted

