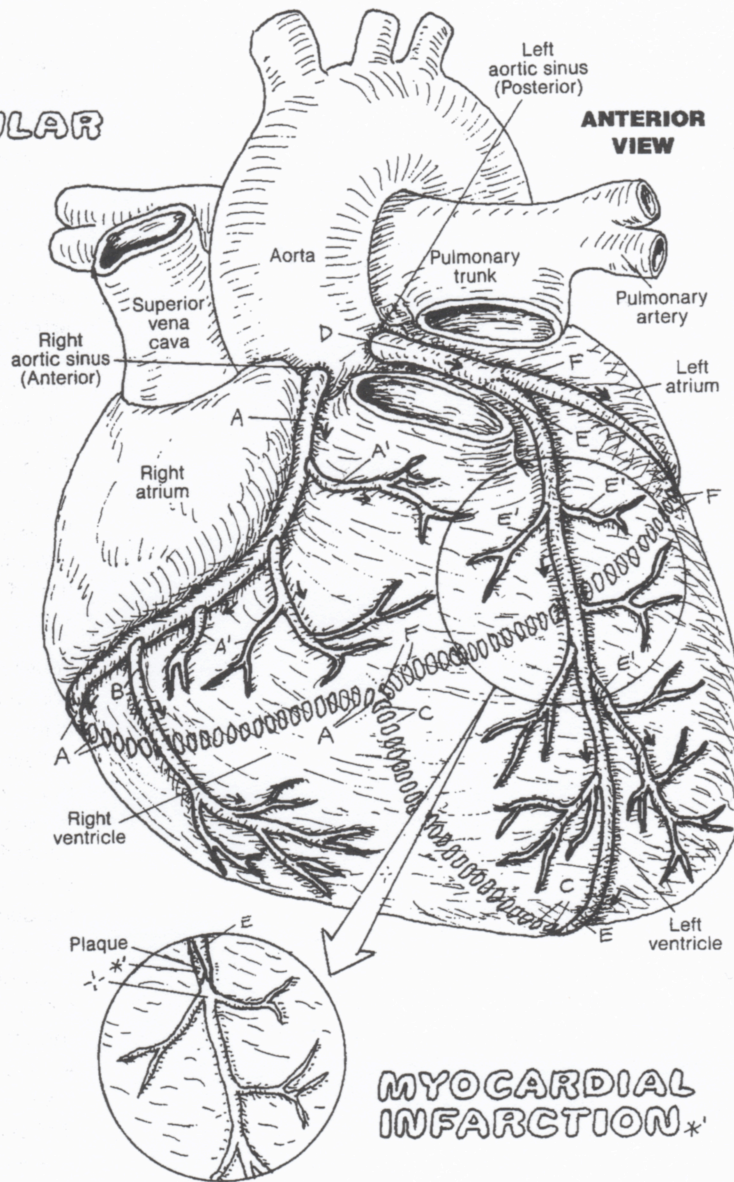


RIGHT CORONARY ARTERY_A
 MUSCULAR BRANCH_{A'}
 MARGINAL BRANCH_B
 POSTERIOR INTERVENTRICULAR
 (DESCENDING) BRANCH_C

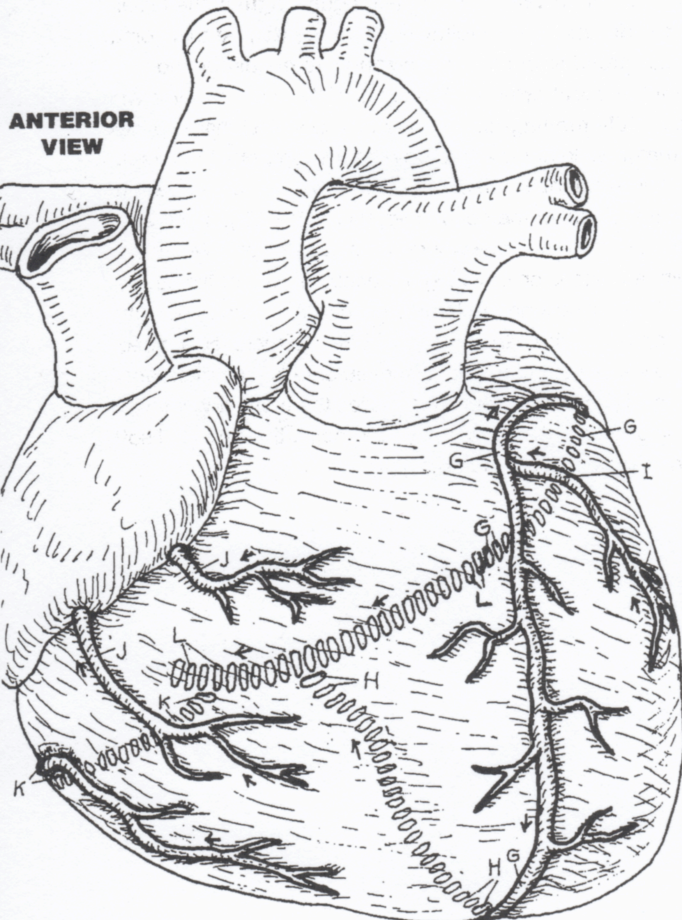
LEFT CORONARY ARTERY_D
 ANTERIOR INTERVENTRICULAR
 (DESCENDING) BRANCH_E
 MUSCULAR BRANCH_{E'}
 CIRCUMFLEX BRANCH_F

CN: Color only the arteries and veins on this page; do not color the heart. Use your brightest colors for A, D, and L. (1) When coloring the arteries, include the broken lines that represent vessels on the posterior surface of the heart. (2) Do the same with the veins. (3) Color the artery in front of the plaque in the circled view.

CORONARY ARTERIES



CARDIAC VEINS



GREAT CARDIAC V._G
MIDDLE CARDIAC V._H
MARGINAL V._I
ANTERIOR CARDIAC V._J
SMALL CARDIAC V._K
CORONARY SINUS_L