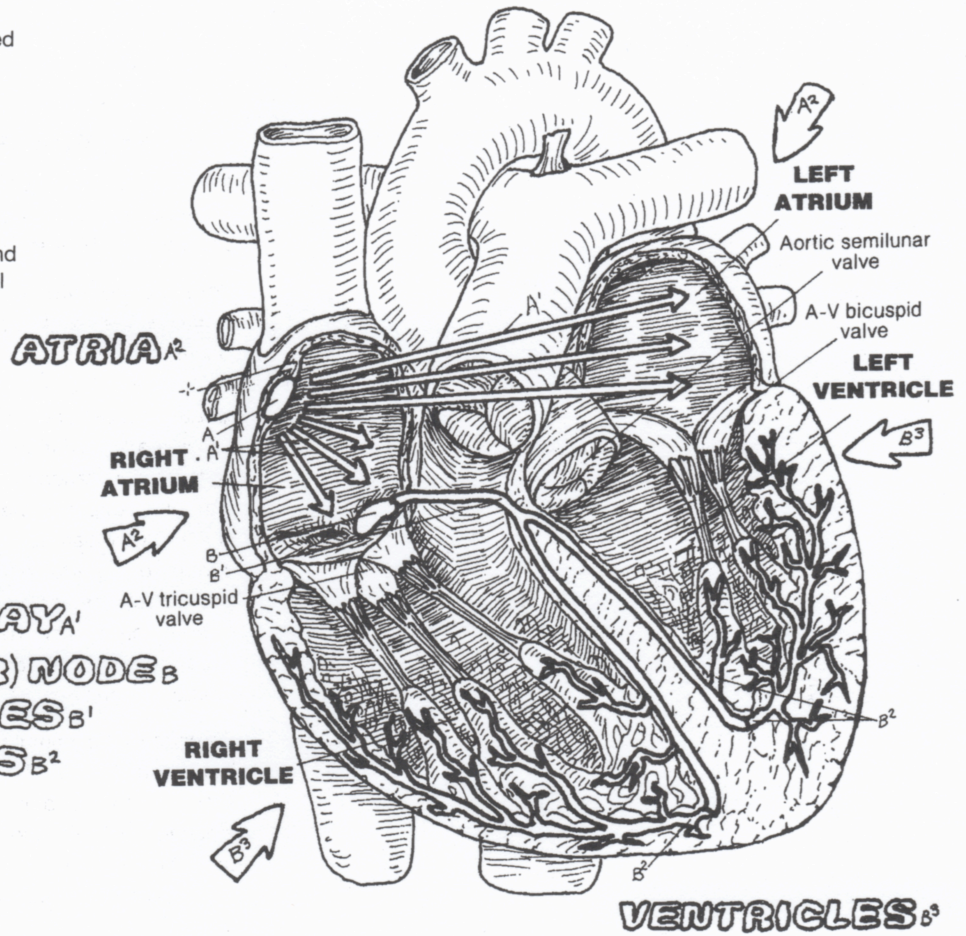


CN: Use blue for D and red for E. Use a very light color for B so that the patterns of dots identifying segments B-B³ of the ECG remain visible after coloring. The QRS complex and the S-T segment (ECG diagram) are colored similarly; they both reflect ventricular depolarization. (1) Begin at upper right and color the four large arrows identifying the atria, A², and ventricles, B³, as well as their names; do not color the atria and ventricles. Color the internodal and interatrial pathway arrows, A¹. (2) In the middle of the page, color the stages of blood flow through the heart and their related letters; they relate to voltage changes in the ECG below. (3) Color the ECG and related letters, starting at the left. (4) Color the horizontal bar below the time line.

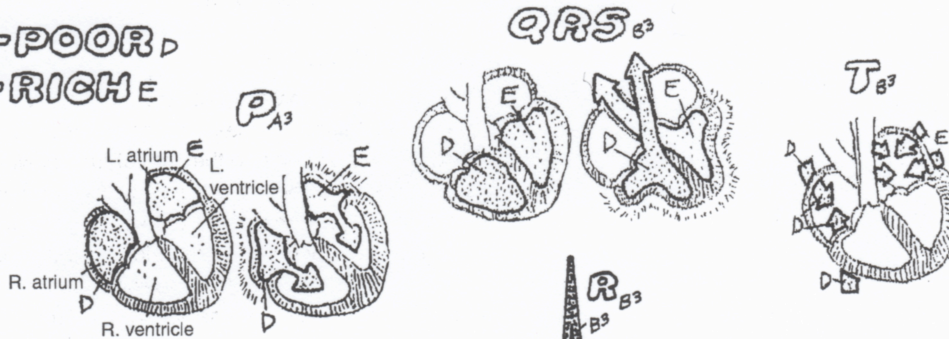


CONDUCTION SYSTEM

- SA (SINOATRIAL) NODE A^1
- INTERNODAL PATHWAY A^1
- AV (ATRIOVENTRICULAR) NODE B^1
- AV BUNDLE / BRANCHES B^2
- PURKINJE PLEXUS B^3

BLOOD FLOW

- OXYGEN-POOR D
- OXYGEN-RICH E



ELECTROCARDIOGRAM (ECG)

- P WAVE A^3
- P-Q (P-R) INTERVAL $B-B^2$
- QRS COMPLEX B^3
- S-T SEGMENT B^3
- T WAVE B^3
- T-P SEGMENT C

