

**CN:** Use blue for A-A<sup>4</sup>; dotted arrows represent venous blood flow in both illustrations. Use red for H-H<sup>4</sup>; clear arrows represent arterial blood flow in both illustrations. Use light colors for heart cavities B, C, I, and J. (1) Begin with arrows A<sup>4</sup> in the left side of upper drawing above and below the right atrium, B; color A and A<sup>1</sup> in the list of names. Color the structures in the order of the list, A-H<sup>3</sup>. (2) Color the circulation chart below, beginning with the arrow A<sup>4</sup> leading into the right atrium (numeral 1). Color the numerals, and their related arrows, in order from 1 to 4. Do not color the chambers or the vessels in the drawing at lower right.

SUPERIOR VENA CAVA<sub>A</sub>  
 INFERIOR VENA CAVA<sub>A'</sub>



RIGHT ATRIUM<sub>B</sub>



RIGHT VENTRICLE<sub>C</sub>

A-V TRICUSPID VALVE<sub>D</sub>  
 CHORDAE TENDINEAE<sub>E</sub>  
 PAPILLARY MUSCLE<sub>F</sub>



PULMONARY TRUNK<sub>A<sup>2</sup></sub>  
 PULMONARY SEMILUNAR VALVE<sub>C</sub>  
 PULMONARY ARTERY<sub>A<sup>3</sup></sub>



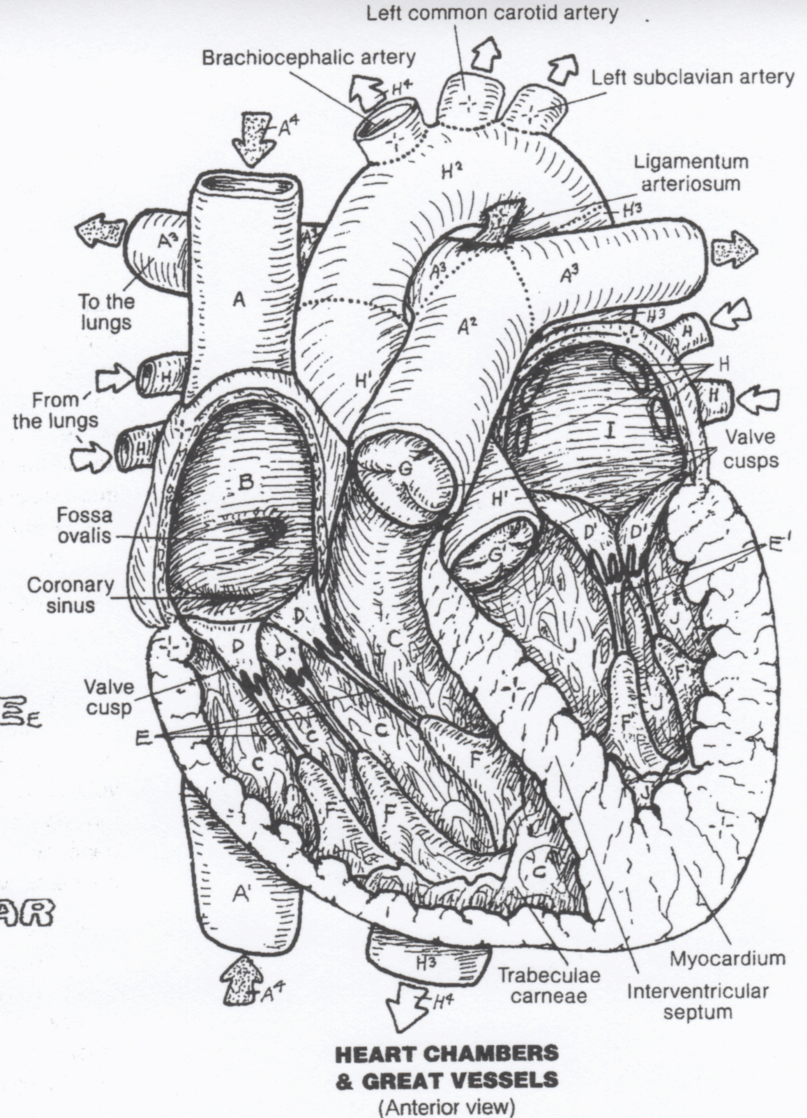
PULMONARY VEIN<sub>H</sub>  
 LEFT ATRIUM<sub>I</sub>



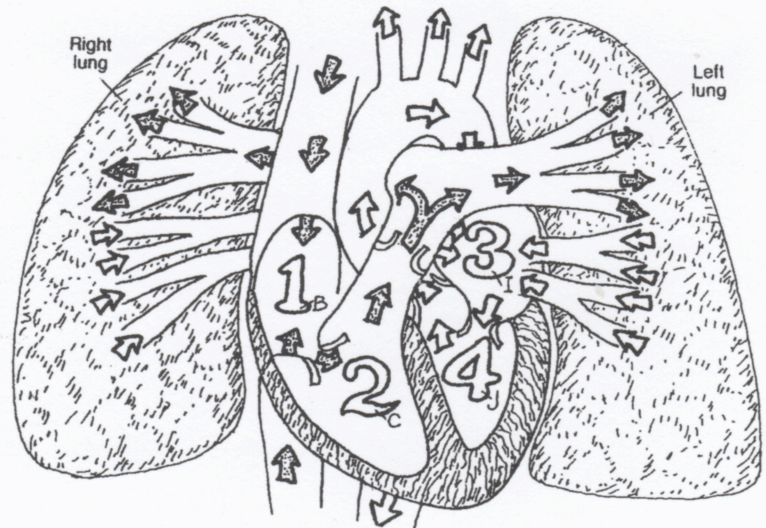
LEFT VENTRICLE<sub>J</sub>  
 A-V BICUSPID (MITRAL) VALVE<sub>D'</sub>  
 CHORDAE TENDINEAE<sub>E'</sub>  
 PAPILLARY MUSCLE<sub>F'</sub>



ASCENDING AORTA<sub>H'</sub>  
 AORTIC SEMILUNAR VALVE<sub>C'</sub>  
 AORTIC ARCH<sub>H<sup>2</sup></sub>  
 THORACIC AORTA<sub>H<sup>3</sup></sub>



OXYGENATED BLOOD → H<sup>4</sup>  
 DEOXYGENATED BLOOD → A<sup>4</sup>



CIRCULATION THROUGH THE HEART  
 (Diagrammatic)