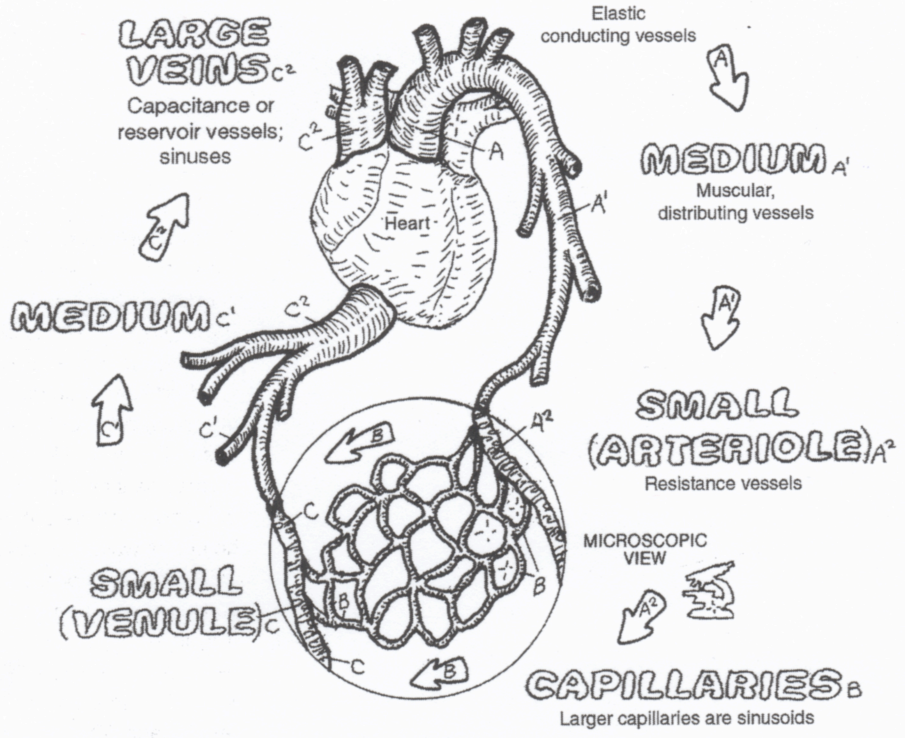


CN: Use red for A, purple for B, and blue for C (colors you used in the previous page) for the names and related types of blood vessels above.

(1) Begin with the name "Large Arteries" in the upper illustration, and color all the vessels and names. (2) Color the names of the blood vessel types in the section titled "Vessel Structure," and their characteristic components. Use very light colors for D, F, and H. (3) Note that the vas and nervus vasorum in the fibrous tissue layer, H, of the lower arterial cross section are not to be colored. (4) In the two diagrams of the vein, C¹, at far right, note the closed venous valves in the lower vein, and the functioning valves in the upper vein. The blood between the two valves in the upper drawing is to be colored gray so as not to be confused with the vein structure.



Elastic conducting vessels

MEDIUM A¹
Muscular, distributing vessels

SMALL (ARTERIOLE) A²
Resistance vessels

MICROSCOPIC VIEW

CAPILLARIES B
Larger capillaries are sinusoids

VESSEL STRUCTURE

TUNICA INTERNA

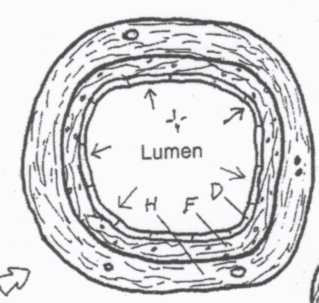
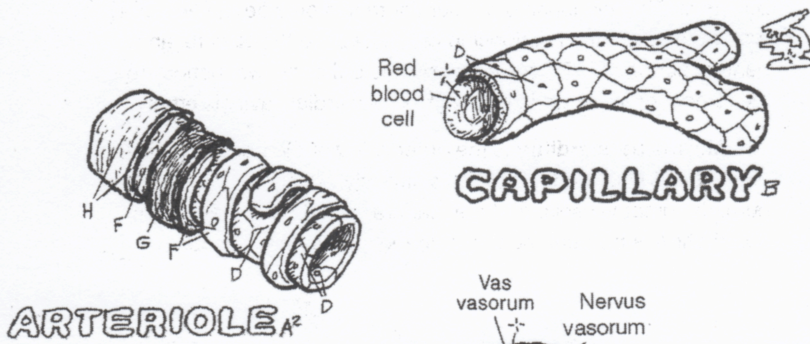
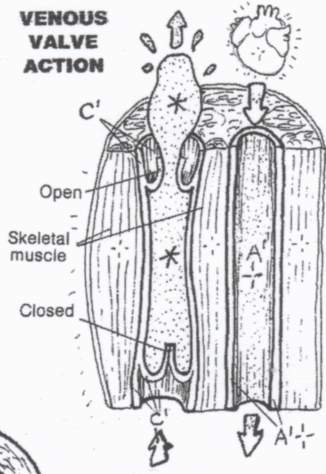
ENDOTHELIUM, INTERNAL ELASTIC LAMINA E

TUNICA MEDIA

SMOOTH MUSCLE F, EXTERNAL ELASTIC LAMINA G

TUNICA EXTERNA

FIBROUS TISSUE H



CROSS-SECTIONAL VIEW

