

MUSCULAR SYSTEM / LOWER LIMB

MUSCLES OF THE ANTERIOR THIGH

CN: The patellar ligament, G*, is colored gray but the patella is left uncolored.
 (1) Begin with the deep view of the thigh and then complete the superficial view.
 (2) On the far left, color the visualized portions of the quadriceps that are antagonists to the hamstring group. (3) Complete the action diagrams along the right margin.

MUSCLES

SARTORIUS_A

QUADRICEPS FEMORIS₊

RECTUS FEMORIS_B

VASTUS LATERALIS_C

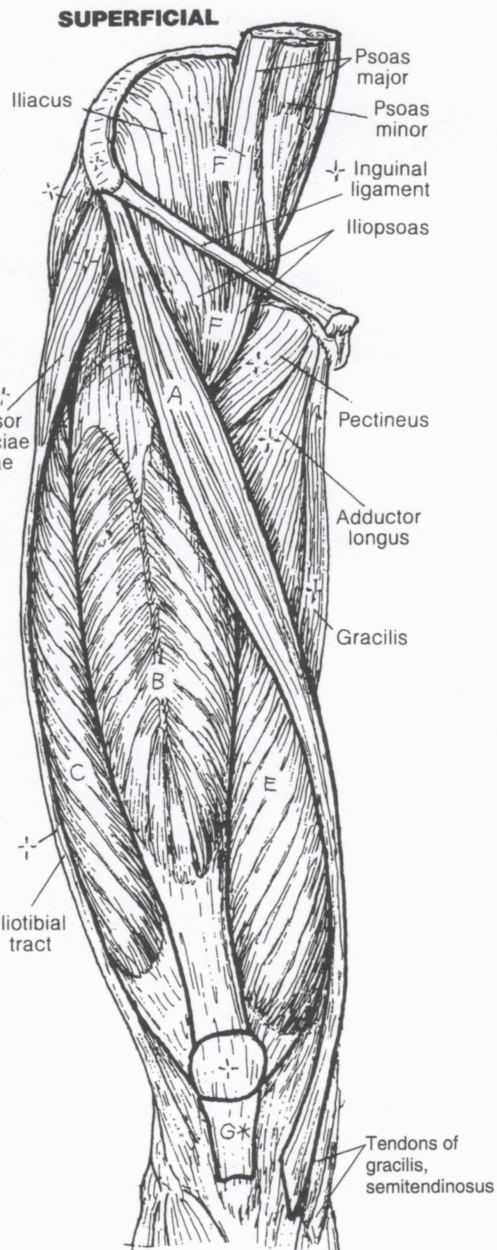
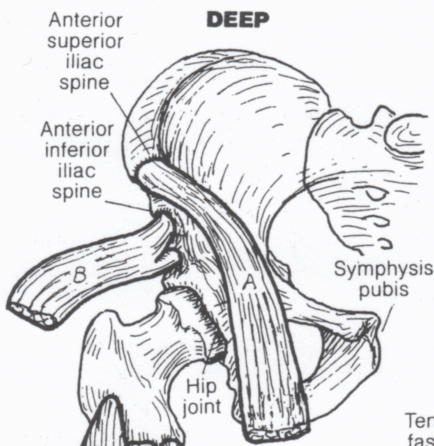
VASTUS INTERMEDIUS_D

VASTUS MEDIALIS_E

ILIOPSOAS_F

PATELLAR LIGAMENT_{G*}

ANTERIOR VIEW



LATERAL VIEW

