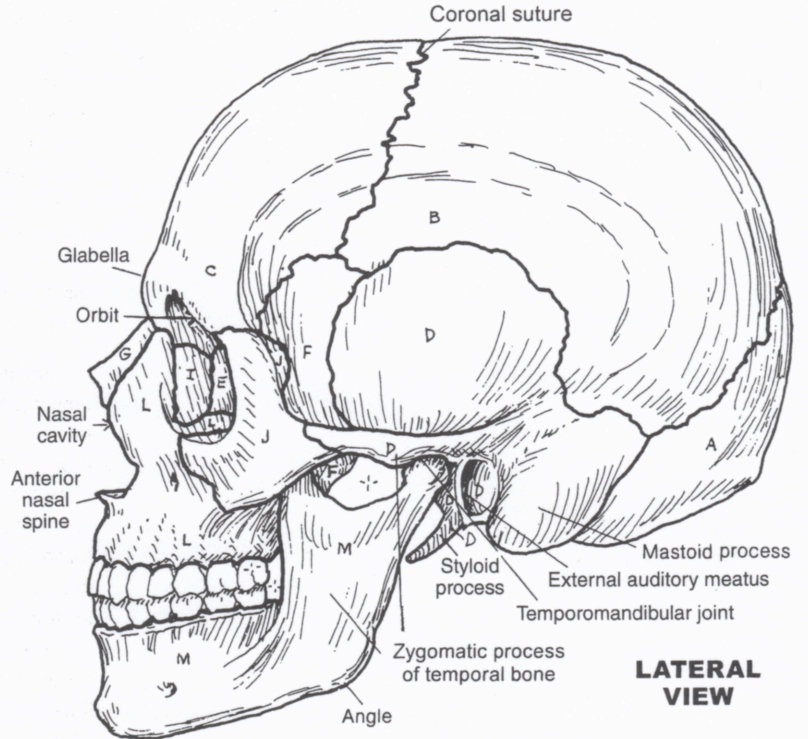
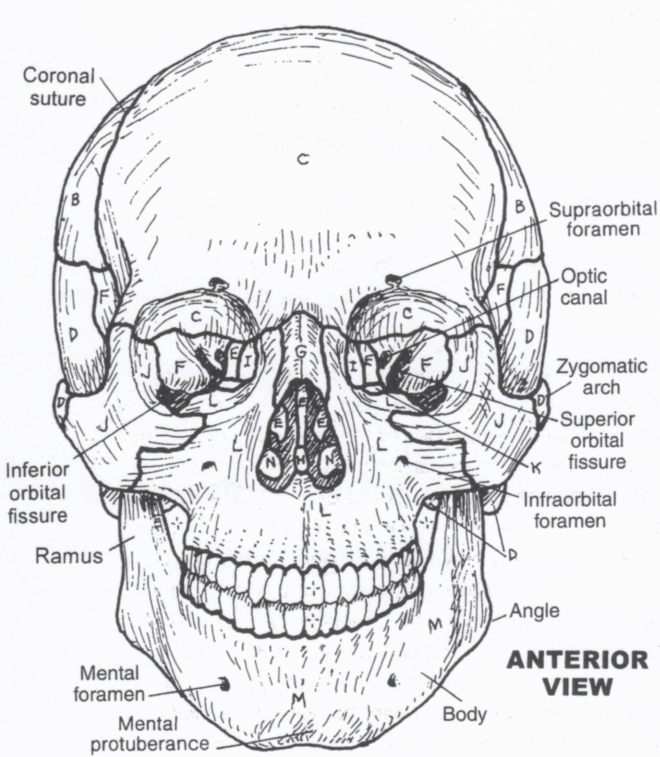


8 CRANIAL

OCCIPITAL (1)_A PARIETAL (2)_B FRONTAL (1)_C
 TEMPORAL (2)_D ETHMOID (1)_E SPHENOID (1)_F

14 FACIAL

NASAL (2)_G VOMER (1)_H LACRIMAL (2)_I
 ZYGOMATIC (2)_J PALATINE (2)_K MAXILLA (2)_L
 MANDIBLE (1)_M INFERIOR NASAL CONCHA (2)_N



CN: Save the brightest colors for the smallest bones and the lightest colors for the largest. (1) Color one bone in all the views in which it appears before going on to the next bone. (2) There are some very small bones in the orbits and in the lower part of the posterior view of the skull; look carefully before coloring to determine their color boundaries. (3) Do not color the darkened areas in the orbits and nasal cavity in the anterior view.

